



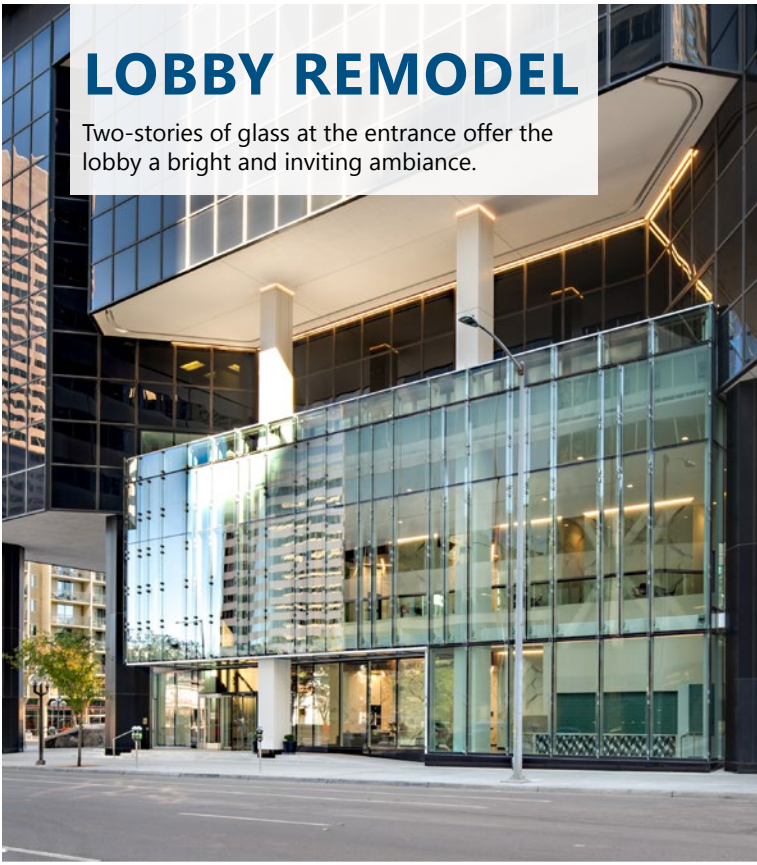
GRANITE TOWER

GraniteTowerDenver.com



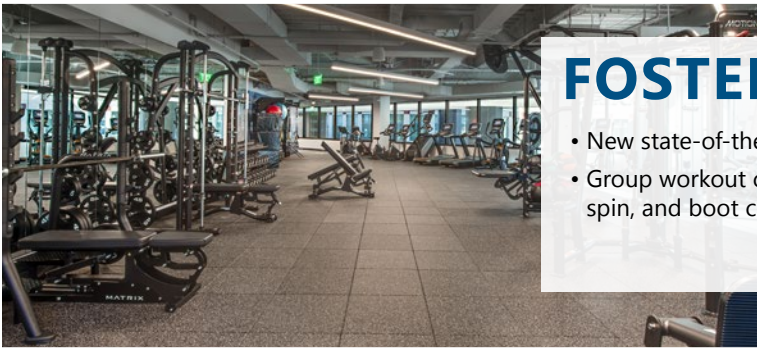
LOBBY REMODEL

Two-stories of glass at the entrance offer the lobby a bright and inviting ambiance.



FOSTER A HEALTHY LIFESTYLE

- New state-of-the-art fitness center
- Group workout classes including yoga, spin, and boot camp
- New locker rooms equipped with showers and towel service
- Complimentary bicycle storage and tuning station



REFRESHING CHANGE OF SCENERY

- Outdoor workspace
- Available for private parties
- Flexible conferencing facility
- WiFi



A SENSE OF COMMUNITY

Building lounge offers an ideal location for company meetings, lunch-and-learns, a change of scenery throughout the day, small group meetings, and a place to reconnect.



AN EXPERIENCE DESIGNED TO DELIVER A MODERN, CONVENIENT APPROACH TO WORK—AND LIFE.



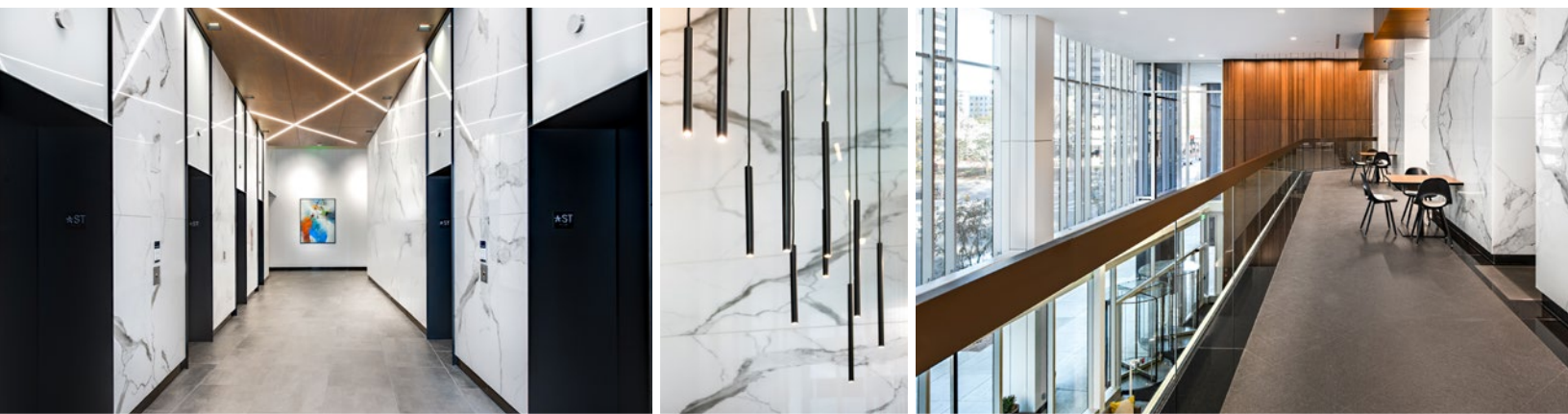
ENERGY PERFORMANCE
SCORECARD

ENERGY STAR SCORE

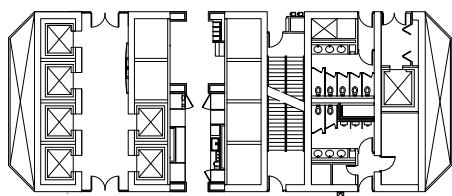
94

THIS BUILDING USED
4% LESS ENERGY
THAN LAST YEAR





TYPICAL FLOORS ARE 21,000 SF



LARGE BLOCKS OF OPPORTUNITY

- Spec suites and full floors available
- Collaborative workspace
- Exceptional views
- Building signage available

BUILDING FEATURES

BUILDING SIZE 593,527 RSF

STORIES 31

YOC 1983

PARKING 1/1,000

CLASS A Office

A LANDMARK, AWARD-WINNING TOWER LOCATED IN THE HEART OF DOWNTOWN DENVER AT THE GATEWAY TO LODO.

For more information, please contact:

James Roupp
Managing Director
+1 303 217 7947
james.roupp@am.jll.com

Andy Ross
Managing Director
+1 303 260 6504
andy.ross@am.jll.com

Jones Lang LaSalle Brokerage, Inc.



©2021 Jones Lang LaSalle IP, Inc. All rights reserved. All information contained herein is from sources deemed reliable; however, no representation or warranty is made to the accuracy thereof.



GraniteTowerDenver.com